

Supply to Essex County Transmission Reinforcement Project

Invitation to Workshop on Route Alternatives Thursday, October 29, 7 – 9 p.m., Comber Community Centre

Working to improve electricity supply in Essex County

Hydro One is nearing completion of the Class Environmental Assessment (EA) to reinforce the transmission system that supplies Essex County and Windsor to ensure an adequate and reliable supply of electricity for the future.

At Public Information Centre #3 held in Leamington on July 16, 2009, Hydro One presented a proposed site for a new transformer station in Leamington and a proposed route for a new 230 kilovolt (kV) transmission line to connect the station to the existing transmission lines south of Highway 401. North of County Road 8, Hydro One's proposed route would travel along the east side of Lakeshore Road 245. This route is shown in red on the attached map.

Possible Transmission Line Route Alternatives

At the Public Information Centre, Hydro One was asked to consider alternative routes north of County Road 8 between Lakeshore Roads 243 and 245 that would follow existing property lines, if possible. As a result, Hydro One investigated two alternative routing options, shown in yellow and blue on the map. We have confirmed that a route located at mid-concession (the yellow line) is not feasible due to the proposed location of turbines for Brookfield Renewable Power's future Comber Wind Project. However, the route shown in blue is a technically-viable alternative. This alternative route would also change the way properties between Leamington Concession 11 and County Road 8 are crossed.

Purpose of the Workshop

We're inviting all potentially-affected property owners and interested parties to participate in a workshop with the following objectives in mind:

- Outline the Class EA process and the criteria Hydro One uses to evaluate alternative routes
- Obtain your input on the evaluation criteria to understand which are most important to you
- Confirm information on local environmental and physical features, such as drain locations, etc.
- Review next steps in the route evaluation process leading to the identification of a preferred route.

Your Participation is Important

Public consultation is an important part of this project and we hope you are able to participate at the workshop on October 29, from 7 – 9 p.m., at the Comber Community Centre. The workshop will be led by an independent facilitator to ensure that everyone has an opportunity to contribute fully and to make the best use of your time. A draft agenda is attached.

Please RSVP your attendance at the workshop to:

Tel: 1-877-345-6799

Email: Community.Relations@HydroOne.com



Partners in Powerful Communities

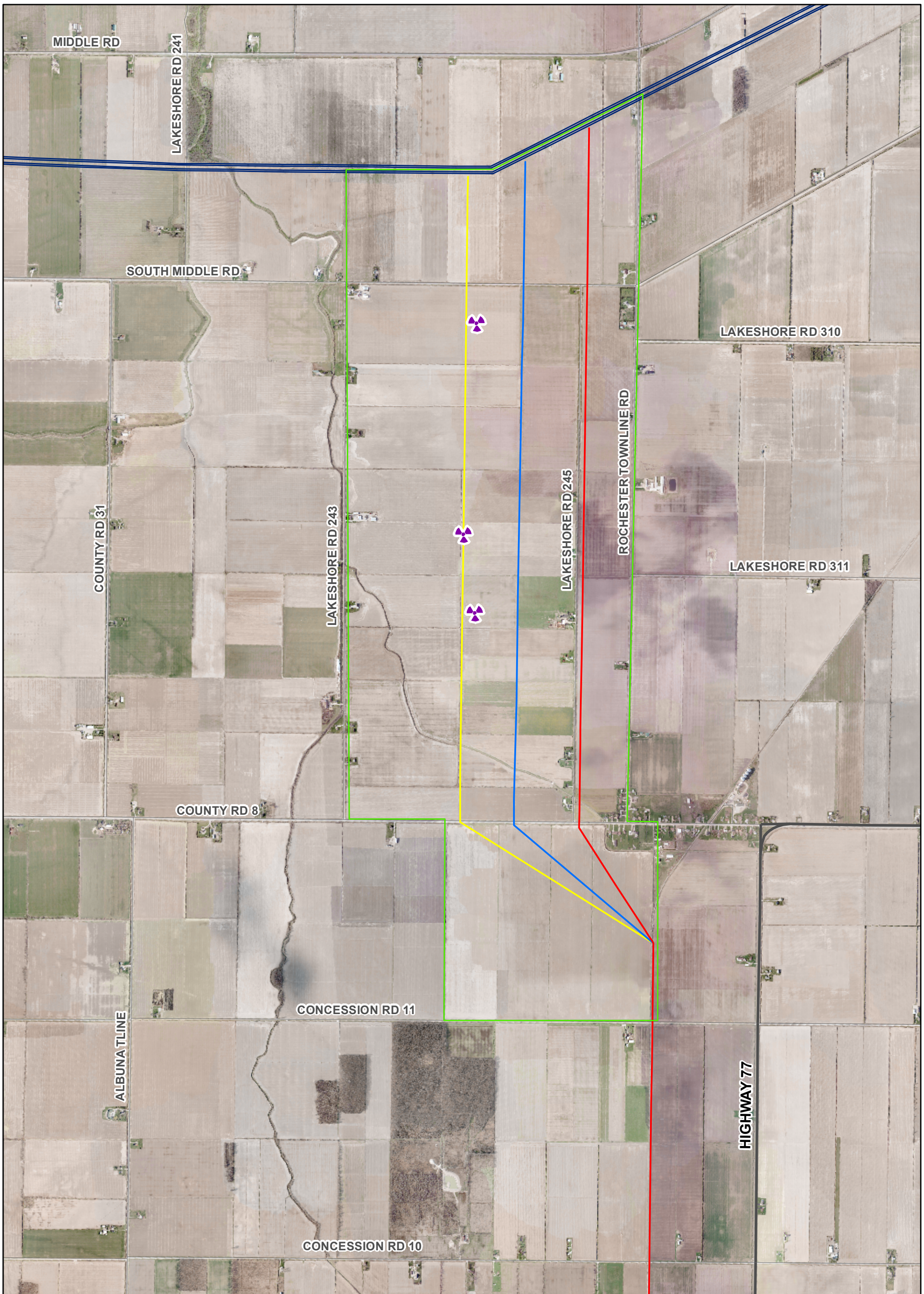


Workshop on Route Alternatives

Thursday, October 29, 2009, 7:00 p.m. – 9:00 p.m.
Comber Community Centre

Draft Agenda

- 7:00 – 7:10 p.m. **Welcome & Introductions**
- Carrie-Lynn Ognibene, Hydro One Community Relations
- 7:10 – 7:15 p.m. **Workshop Objectives and Format**
- Workshop facilitator
- 7:15 – 7:45 p.m. **Background Presentations**
1. Supply to Essex County Project Overview
- John Sabiston, Manager, Transmission Planning, Hydro One
 2. Environmental Assessment Process Overview
& Route Evaluation Criteria
- Patricia Staite, Environmental Coordinator, Hydro One
- 7:45 – 8:55 p.m. **Discussion of Route Evaluation Criteria
and Identification of Key Issues**
- Workshop facilitator
- 8:55 – 9:00 p.m. **Next Steps and Closing Remarks**
- Patricia Staite
- 9:00 p.m. **Adjourn**



**Supply to Essex County:
Transmission Line
Route Alternatives**

Existing Transmission Lines
 230 kV
Roads
 Highways
 Major Roads

Proposed Location of Brookfield Wind Turbines
 Route Alternative Presented at PIC #3
 Route Suggested at PIC #3
 Route Suggested at PIC #3 (not feasible)
 Area within which landowners have been invited to the workshop



Date: August 2009
 Map09-49_TurbineLocationMap_2_workshop
 Produced By: Inergi LP (GIS Services)

Copyright Hydro One Networks Inc. All rights reserved. No part of this drawing may be redistributed or reproduced in any form by any photographic, electronic, mechanical or any other means, or used in any information storage or retrieval system. Neither Hydro One Networks Inc. nor any of its affiliates assumes liability for any errors or omissions.

NOT TO BE REPRODUCED OR REDISTRIBUTED CONFIDENTIAL TO HYDRO ONE NETWORKS INC.

