

County of Essex's Asset Management Solution

After an extensive competitive process, the County of Essex (Ontario) including the lower tier municipalities have selected ESRI Canada to implement a complete asset management solution. The solution will take advantage of the already existing ArcGIS foundation to provide the county's public works departments with a spatially-enabled asset management system. It will also replace current paper based processes, thus decreasing operational costs. The system will assist the County and its member municipalities in meeting the minimum maintenance standards for municipal highways (Ontario Regulation 239/02) and Bill 175 (Sustainable Water and Sewage Systems Act).

"Cityworks by Azteca Systems, Inc. is the only GIS-based asset and maintenance management system available in the market today," said Alex Miller, President, ESRI Canada. "It will provide the County of Essex

with a solution to track and manage their infrastructure information, customer requests, and work orders within their current GIS environment. Cityworks will leverage the power of ESRI's ArcGIS solution and provide a true work management solution for the county."

Cityworks enables local governments to automate the management of their assets, log service requests, generate work orders and expense reports, as well as manage resources. The functionality allows local governments to comply with government regulations, manage their assets and budgets, and document the handling of service requests while improving their operations and customer service. Since Cityworks takes full advantage of the underlying GIS technology, it allows users to easily spot trouble areas, and adds the spatial dimension to problem-solving and decision making processes.

"The County of Essex and its lower tier municipalities are very eager to start this project which is being funded, in part, by the Ministry of Natural Resource's Geosmart Program," said Wendy St. Amour, Manager of IT, County of Essex. "ESRI Canada's solution will help us comply with provincial regulations like Bill 175 and Minimum Maintenance Standards for Municipal Highways. Operational personnel realize that this system will make them more efficient, while management sees great benefits in terms of risk management."

Using Cityworks, the county's public works staff will be able to access work orders, make maps, and perform useful analysis. Management will be able to easily check the status of any work order and see it on a map.

County of Essex -
www.countyofessex.on.ca

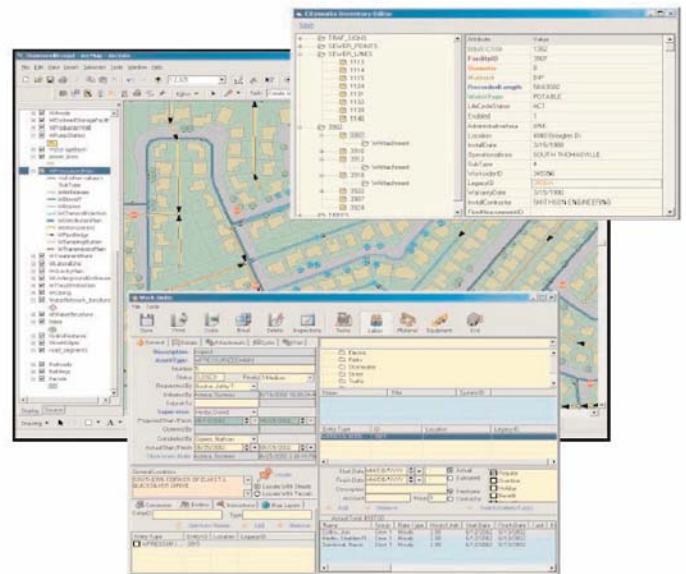
Overall Cost Summary					
	Actual	Estimated (single)	Estimated (group)	Difference	Percent Difference
Labor	\$498.30	\$106.77	\$640.62	-\$142.32	78%
Material	\$499.98	\$150.00	\$900.00	-\$400.02	56%
Equipment	\$265.14	\$74.27	\$445.62	-\$180.48	59%
Total	\$1,263.42	\$331.04	\$1,986.24	-\$722.82	64%

Actual Labor					
Name	Type	Group	Contractor #	Units	Cost
CELLIS, EDDIE	Employee			1.67	83.33
CELLIS, EDDIE	Employee			1.67	83.33
CELLIS, EDDIE	Employee			1.67	83.33
CELLIS, EDDIE	Employee			1.67	83.33
Total				6.68	\$498.30

Actual Material					
Description	Units Required	Cost	Source	Units	Cost
Hot Patch As...	1.67	83.33	Inventory	1.67	83.33
Hot Patch As...	1.67	83.33	Inventory	1.67	83.33
Hot Patch As...	1.67	83.33	Inventory	1.67	83.33
Hot Patch As...	1.67	83.33	Inventory	1.67	83.33
Total		\$499.98			

Actual Equipment					
Description	Hours Required	Units Required	Rate	Units	Cost
R37 Vibrator	1.17	0.17	H...	1.17	11.17
R37 Vibrator	1.17	0.17	H...	1.17	11.17
R37 Vibrator	1.17	0.17	H...	1.17	11.17
R37 Vibrator	1.17	0.17	H...	1.17	11.17
Total				4.68	\$265.14

Work order cost summary in Cityworks



Generate work orders to selected facilities in the GIS

Customer Service: 800-GIS-XPRT

Technical Support: 877-441-0337

e-mail: info@esricanada.com

Victoria 250-383-8330 Edmonton 780-424-ESRI Winnipeg 204-943-ESRI Ottawa 613-234-2103 Québec 418-654-9597
 Vancouver 604-682-4652 Calgary 403-262-ESRI Toronto 416-441-6035 Montréal 514-875-8568 Halifax 902-423-5199

